



## Decolonised [dē-kōl'e-nīz'ed]

*verb*

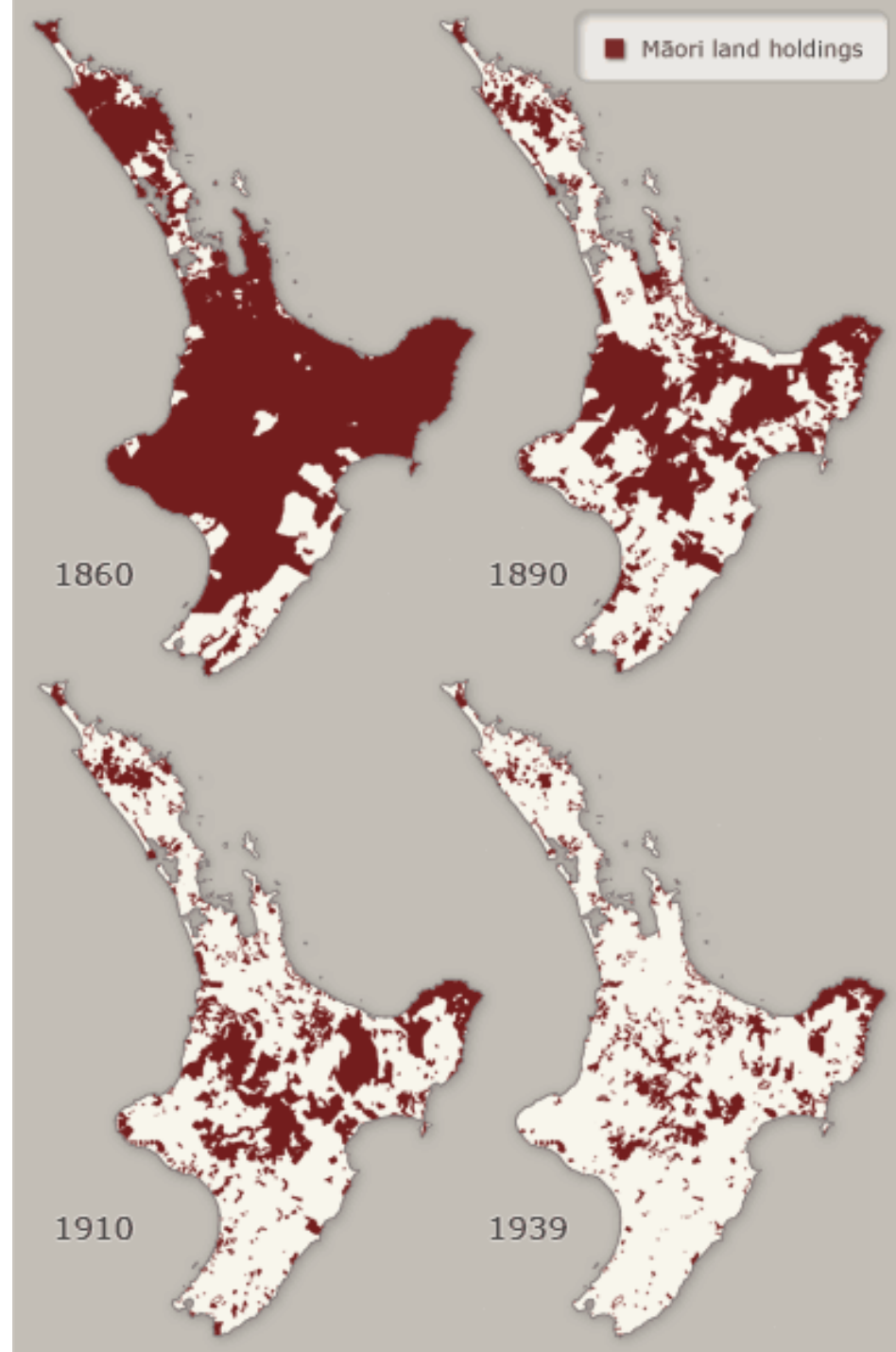
Cities that are *just* places for all whānau,  
reflecting Māori values and identity.



New Zealand National  
Commission for UNESCO  
*Te Kōmihana Matua o Aotearoa mō UNESCO*



# Encroachment of private property ownership





PLAN OF  
**TOWNSHIP OF MARTINBOROUGH**  
FOR SALE.

Apply to

**R. O'CONNOR,**

FRATHERTON STREET, 124 AND 126, WELLINGTON

THESE PLANS ARE MADE BY ORDER OF THE GOVERNMENT BY THE ACT OF 1882 IN THE YEAR 1882







BASTION POINT  
MAORI LAND



PAKALTORE  
(MOUTOA GARDENS)  
IS MAORI  
LAND!  
RETURN NOW!

Aims to identify utopian ideas for decolonising urban form.

## WHY?

- Bring Māori values and mātauranga into city making
- Empowering people and young people, in particular, to engage with city making processes
- Pragmatically – how might Ngāti Toa use settlement land
- Provoke, disrupt, start the conversation.....

# What do mean by decolonising?

- Ngāti Toa values
- Social Justice - just for all whānau

# Research Team

- Māori led (but not Ngāti Toa led) + non-Māori
- Co-production of knowledge – iwi researchers + academic researchers
- Aims to build capacity amongst young Māori and non-Māori

## Research Team



**Bianca Elkington**  
Ngāti Toa  
Education Project Coordinator



**Jasmine Arthur**  
Ngāti Toa  
Educator



**Jennie Smeaton**  
Ngāti Toa  
Pouwakatu (Senior Advisor, Māori), Environmental Protection Agency



**Becky Kiddle**  
Ngāti Porou, Ngāpuhi  
Lecturer, School of Geography, Environment and Earth Sciences



**Morten Gjerde**  
Senior Lecturer, Urban Design School of Architecture



**Ocean Mercier**  
Ngāti Porou  
Senior Lecturer, Te Kawa a Māui



**Amanda Thomas**  
Pākehā  
Lecturer, School of Geography, Environment and Earth Sciences



**Mike Ross**  
Ngāti Hauā  
Lecturer, Te Kawa a Māui



**Derek Kawiti**  
Ngāti Porou, Tuhoe, Ngāti Hine, Ngāpuhi  
Senior Lecturer, School of Architecture and Design



**Tui Arona**  
Ngāpuhi  
Project Coordinator and Research Support



**Chantal Mawer**  
Research Assistant



# How?

- Young people's workshop: 1- 3 March 2017 + 3 – 4 May 2017
- Urban Design Ideas competition: Launch 3 April – Closed 9 May 2017
- Imagining Decolonised Cities Symposium: 13 May 2017

# The politics of decolonisation

# Utopianism

- Utopia = eutopia meaning good place + outopia meaning no place
- Hopeful in orientation – counter to TINA discourses
- Draw on the collective imaginary to go beyond the “possible”

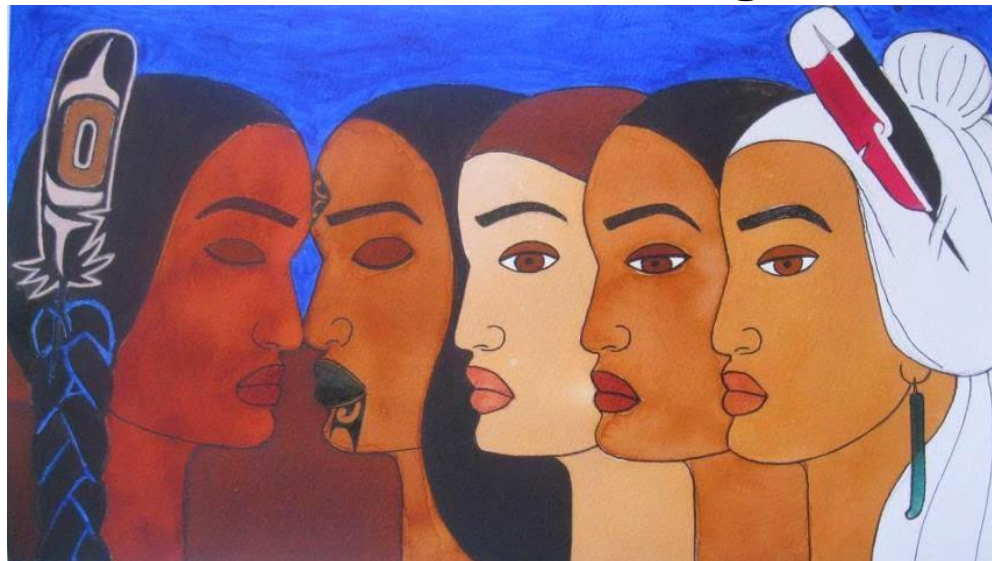




“When I first read this what went through my mind was this - then give me back my pre-settlement language, way of thinking and a people free of oppression. If you want me to design a pre-colonised city return me to my original place in society as a Chief with sovereignty over my own lands and I will show you what an imagination free of 200 years of racism and oppression can conceive. Bring me the unpolluted soils from home that I may weep over them. What you will get then is a shadow of what could be. Gosh, this makes me very emotional.”

# New mātauranga?

- Need new knowledge around this
  - Due to impact of colonisation much Māori knowledge has been lost
  - Tendency to only look to the past and overlay on the present
- Politics around “who” develops mātauranga/controls knowledge/empowered to make knowledge



Māori Women In Solidarity With Idle No More by Robyn Kahukiwa



RNZ ✓

@RadioNewZealand

Home

Posts

About

Videos

Photos

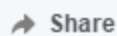
Reviews

Notes

Events

Likes

Create a Page



10 Replies



**Dan Wayman** Why not imagine what a pre- human city looks like - why are these people discriminatingly selecting to 'decolonise' selected ethnic and racial groups AFTER Maori only ? - Sounds like one of Hitlers ideas.

Like · Reply · 22 April at 13:45 · Edited



**Hannah Hadlow** I suppose it wouldn't be a city without people? I think they're interested in what the original settlements looked like, rather than pre-human landscape. It's cultural as opposed to topographical.

Like · Reply · 1 · 22 April at 13:51



**Dan Wayman** Sure - my issue is why are they calling it a 'decolonised city' then - but at the same time seeking to restore or protect evidence of Maori colonisation ?

Like · Reply · 22 April at 14:05



**Ron Kjestrup** Oh, FFS. Relax. It's just an interesting idea

Like · Reply · 4 · 22 April at 16:17



**Marisa Pene** Jog on if you don't wanna play Dan...

Like · Reply · 3 · 22 April at 17:14



**Hannah Hadlow** Hmm... I think the most widely used definition of colonisation is to establish control and settlement over land where native people already live. It goes hand in hand with migration and the idea of claiming territory. Imperialism etc.

Like · Reply · 1 · 22 April at 17:44



**Hannah Hadlow** So to decolonize would be to return the township's CULTURE to what it was before the indigenous people assimilated, I guess. Note, it's not about genocide, it's just about renewing lost culture.

Like · Reply · 8 · 22 April at 17:46



**Dan Wayman** If you can't handle differing opinions Marisa then jog off yourself you fascist

Like · Reply · 1 · 22 April at 19:53



**Jason Mihaere** Also the maori which is a general term given to the people of the land by the settlers theres no recognition of the different Polynesian races here at the time also those the settlers called maori surplanted another lot of people.

Like · Reply · 1 · 22 April at 20:21



**Dan Wayman** Exactly my thought Jason





Imagining Decolonised Cities

**Decolonised** [dē-kōl'e-nīz'ed]

*verb*

Cities that are equitable places for *all* whānau, reflecting Māori values and identity.

## Overview

Colonisation has shaped the form of New Zealand towns and cities in ways that mean that Māori identities and values have often been side-lined. Yet, our cities have always been indigenous places, and we're interested in how urban environments could better reflect this.

This competition encourages people to think about how we might 'decolonise' cities in Aotearoa New Zealand. There are two sites in Porirua City – the harbour front and whānau land for a papakāinga – that people are invited to redesign. We want people from all walks of life, backgrounds, ages and cultural groups to get involved. Creative, positive and forward-looking solutions can come from anywhere and anyone who might engage with these issues. We welcome a wide range of submission types including masterplans, drawings, essays, poetry and film.

# Early Analysis

Professional category entries

Looking for common themes

Two entries took clean slate approach

Others put down new layers on existing conditions



Image source: Clynt White, Lei Chen, Emma Erasmus



DEEPWATER AND TIDAL ZONE

RE-NATURALISATION ZONE

PRODUCTIVE TERRACES

SETTLEMENT ZONE





WHAT IF YOU COULD WALK  
ACROSS THE HARBOR?

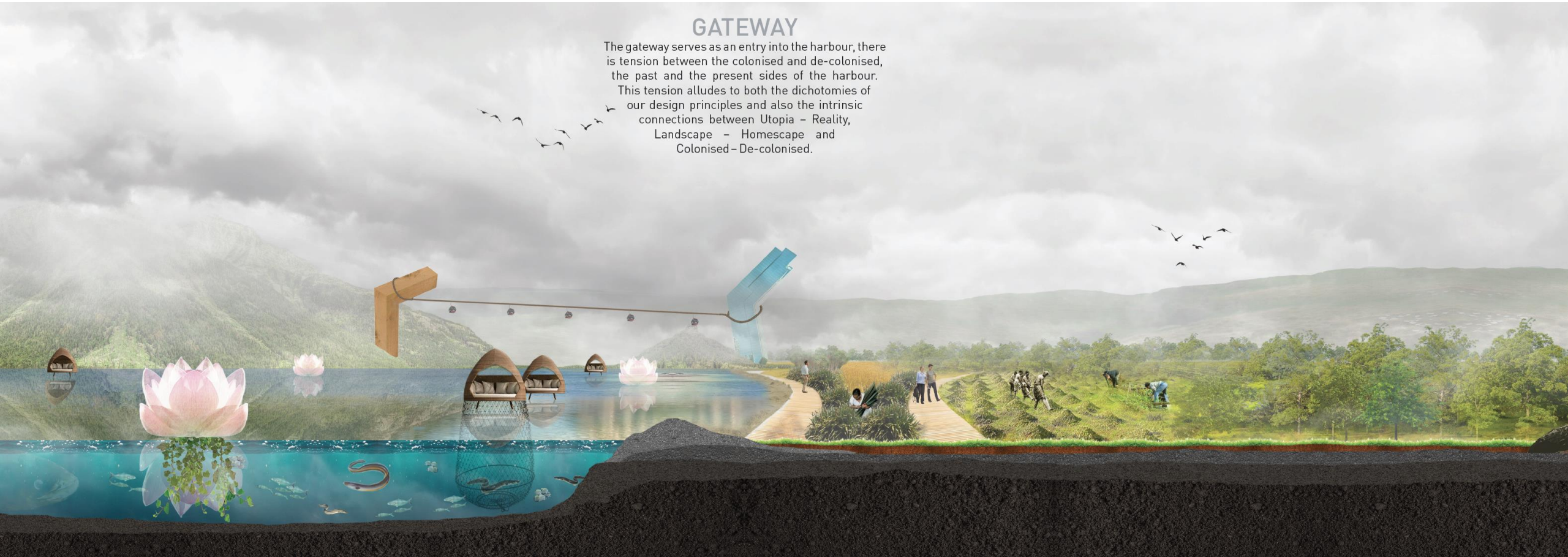
Use of Narrative



## GATEWAY

The gateway serves as an entry into the harbour, there is tension between the colonised and de-colonised, the past and the present sides of the harbour.

This tension alludes to both the dichotomies of our design principles and also the intrinsic connections between Utopia - Reality, Landscape - Homescape and Colonised - De-colonised.



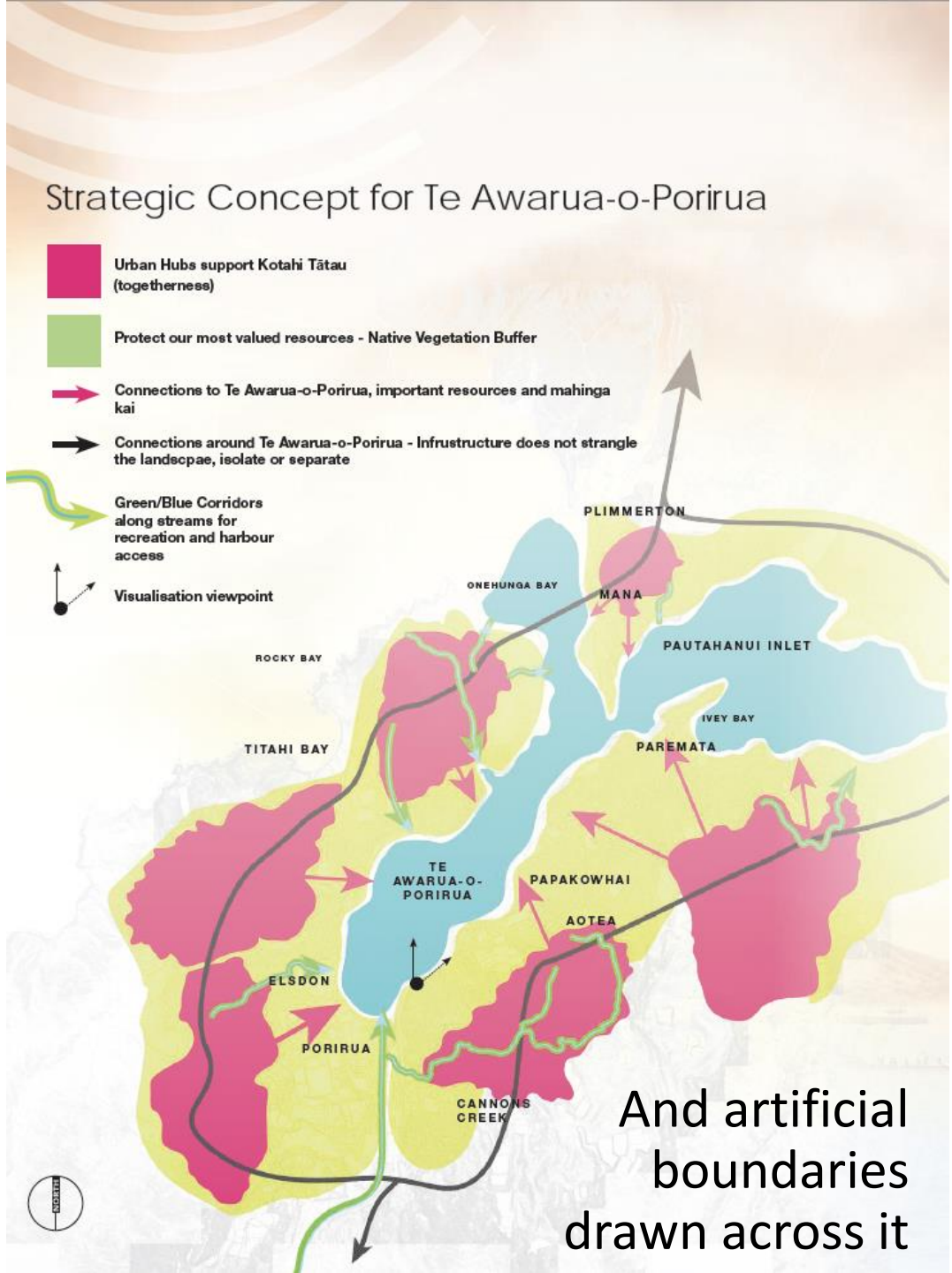
Use of Narrative





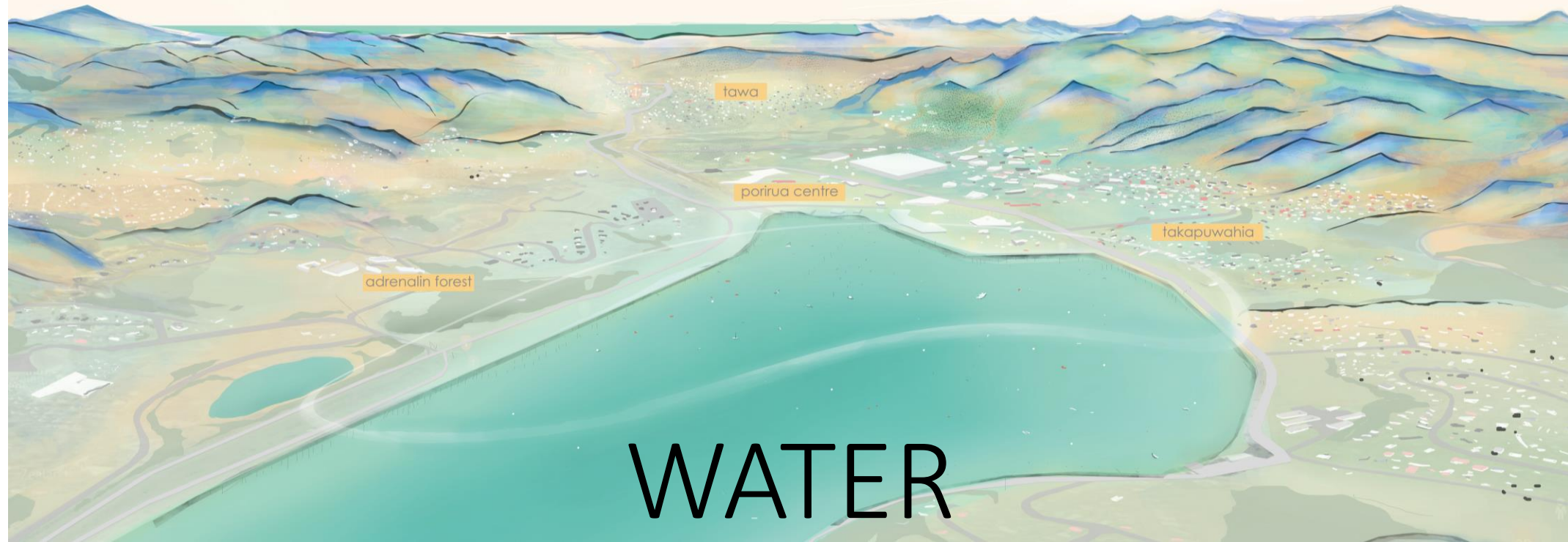
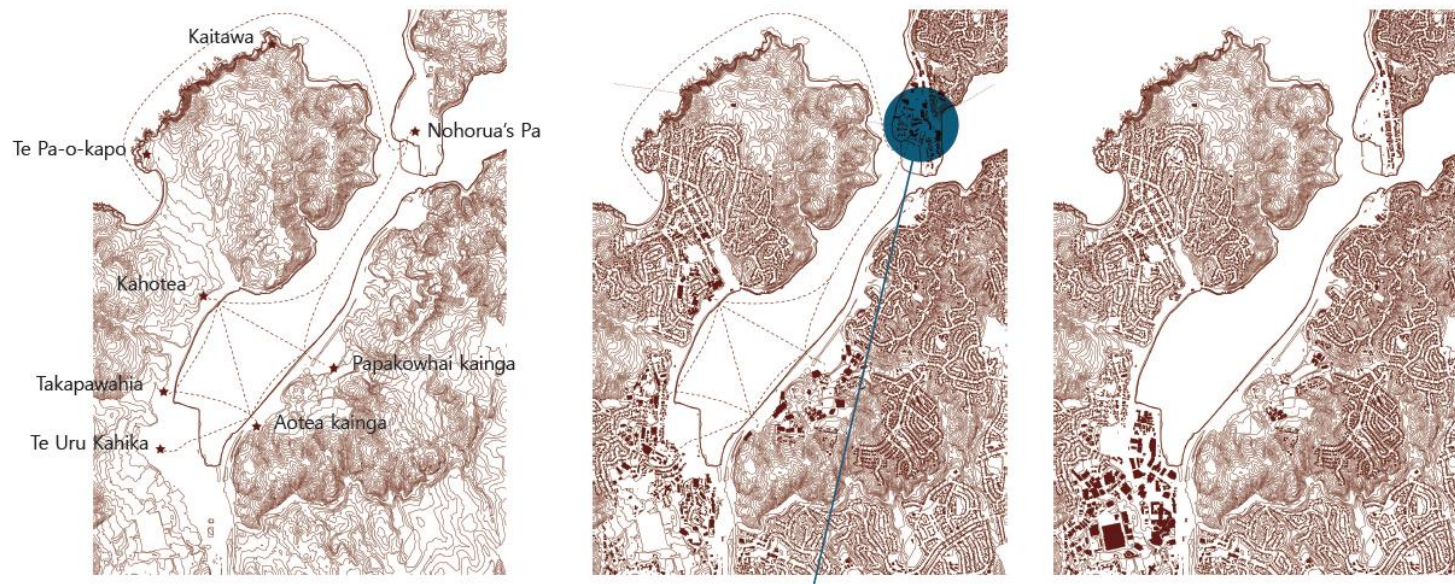
Source: Lizzie Yarina

Confronting issues arising with private ownership of land



Source: Fiona Whyte





Source: Norman Wei





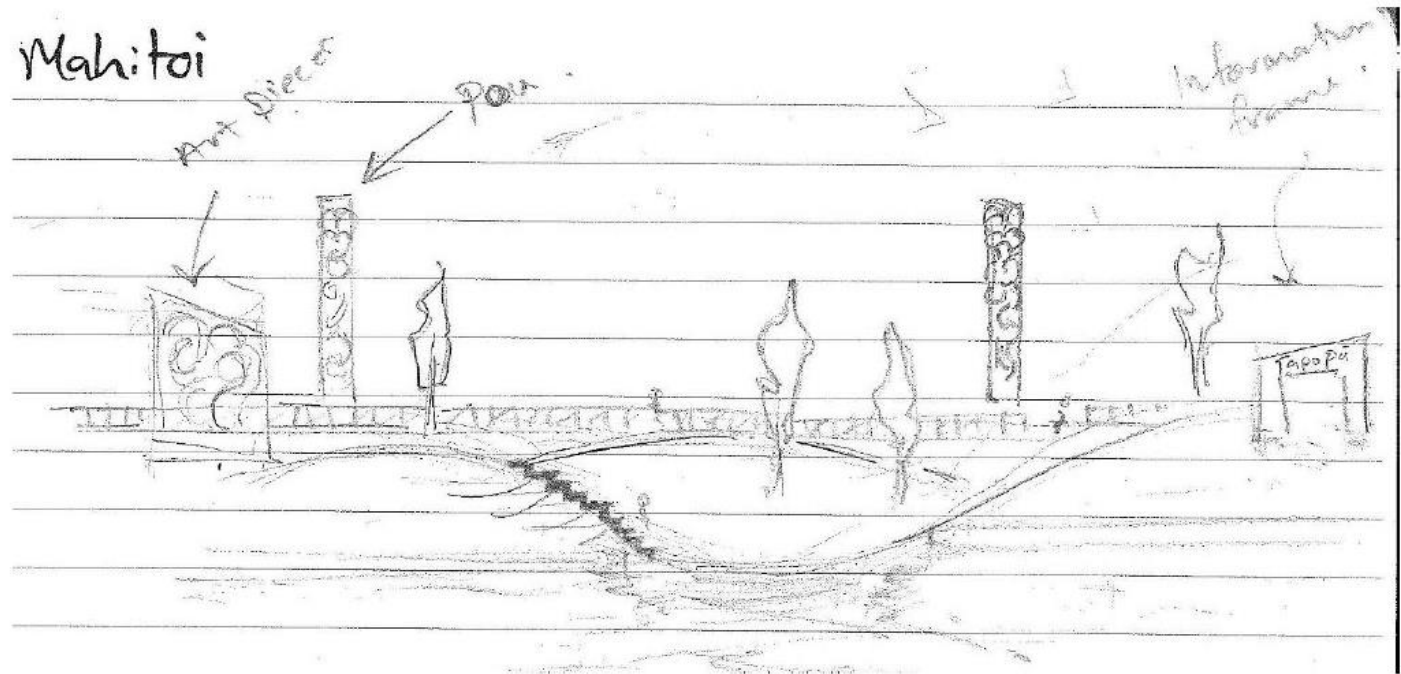
Source: Lizzie Whyte

## Moderated utopias

Pragmatism

engagement with economic and other contextual issues

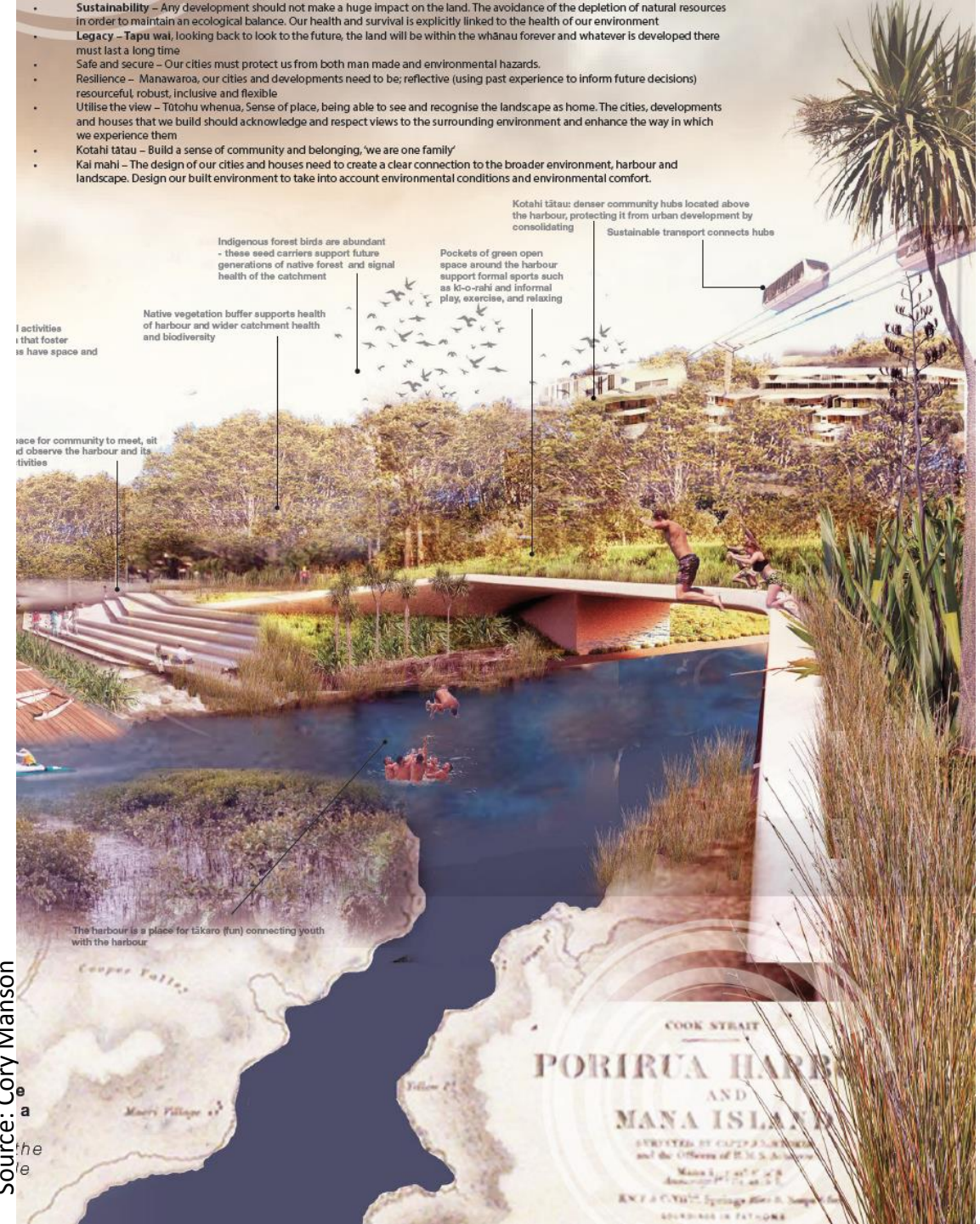
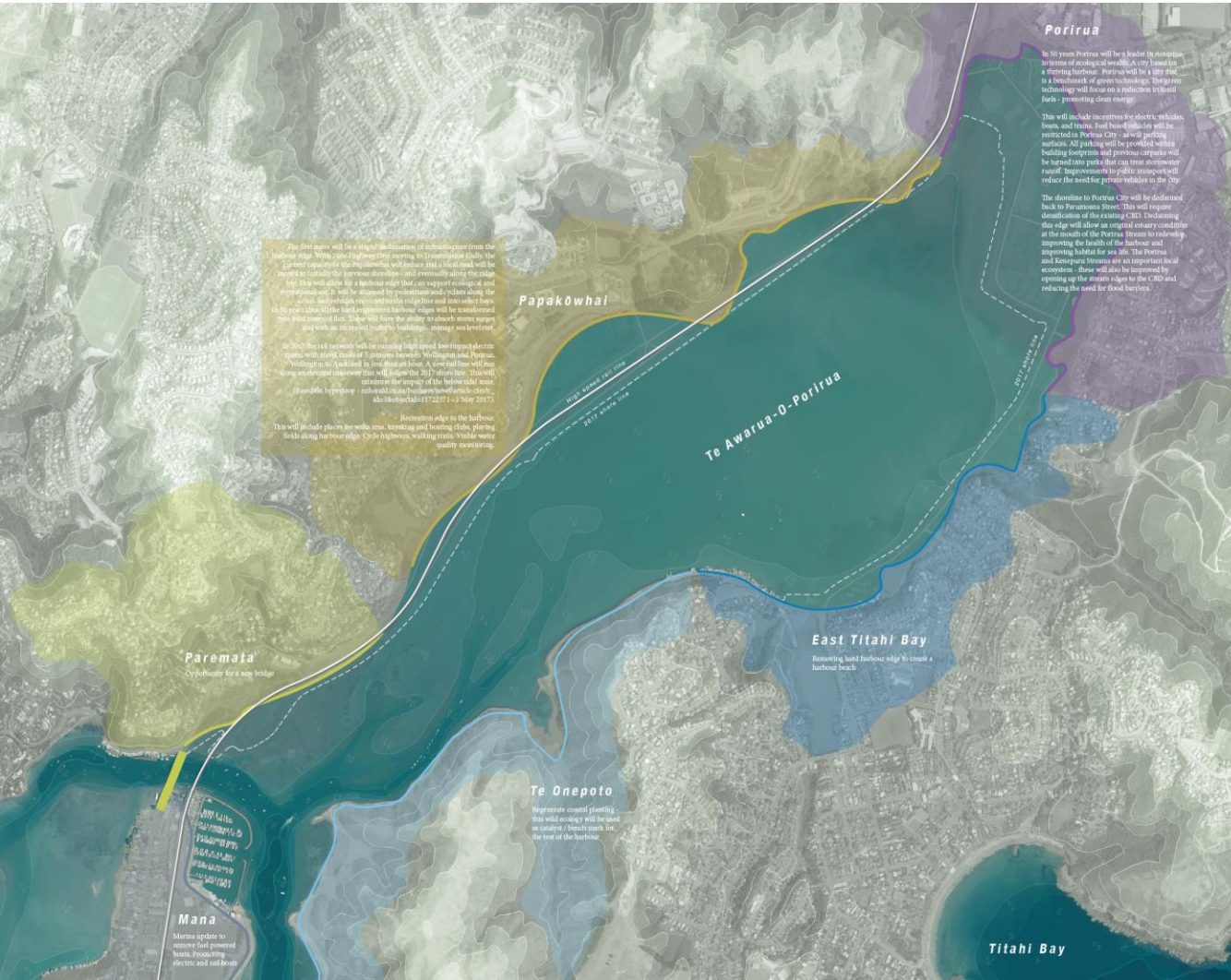
Perspective of “Tuaiwi highline” and allowing locals engagement with the coast



Source: Fiona Whyte



# Embracing technology



Source: Cory Manson

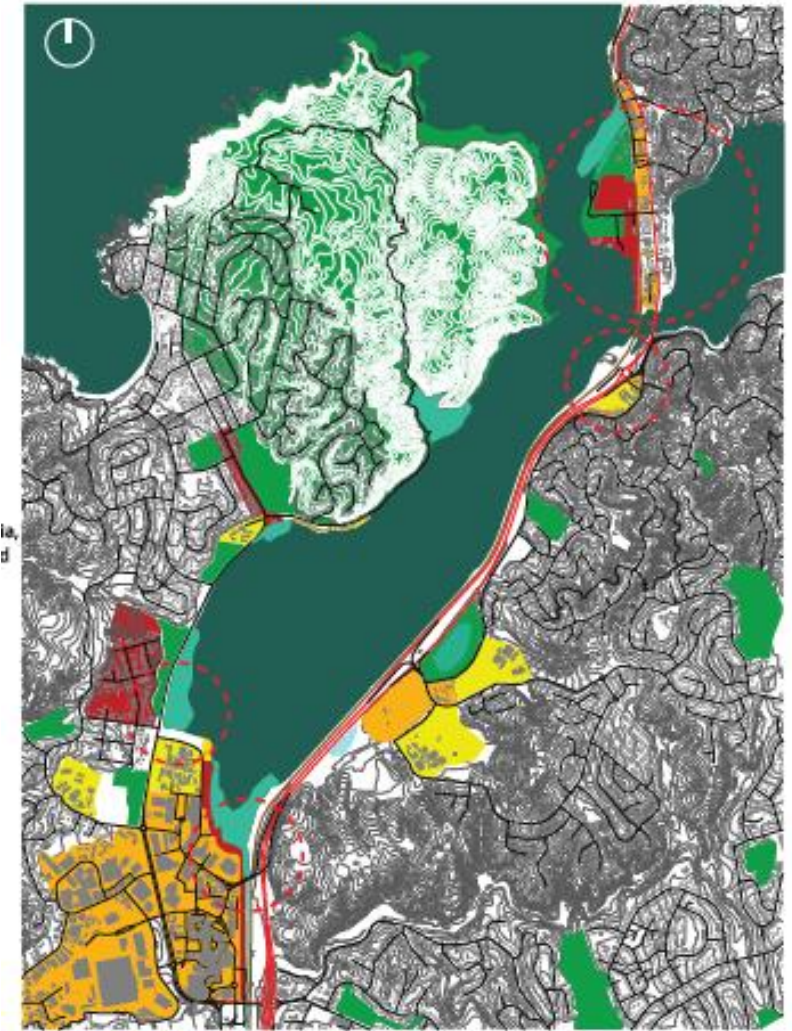
Source: Fiona Whyte



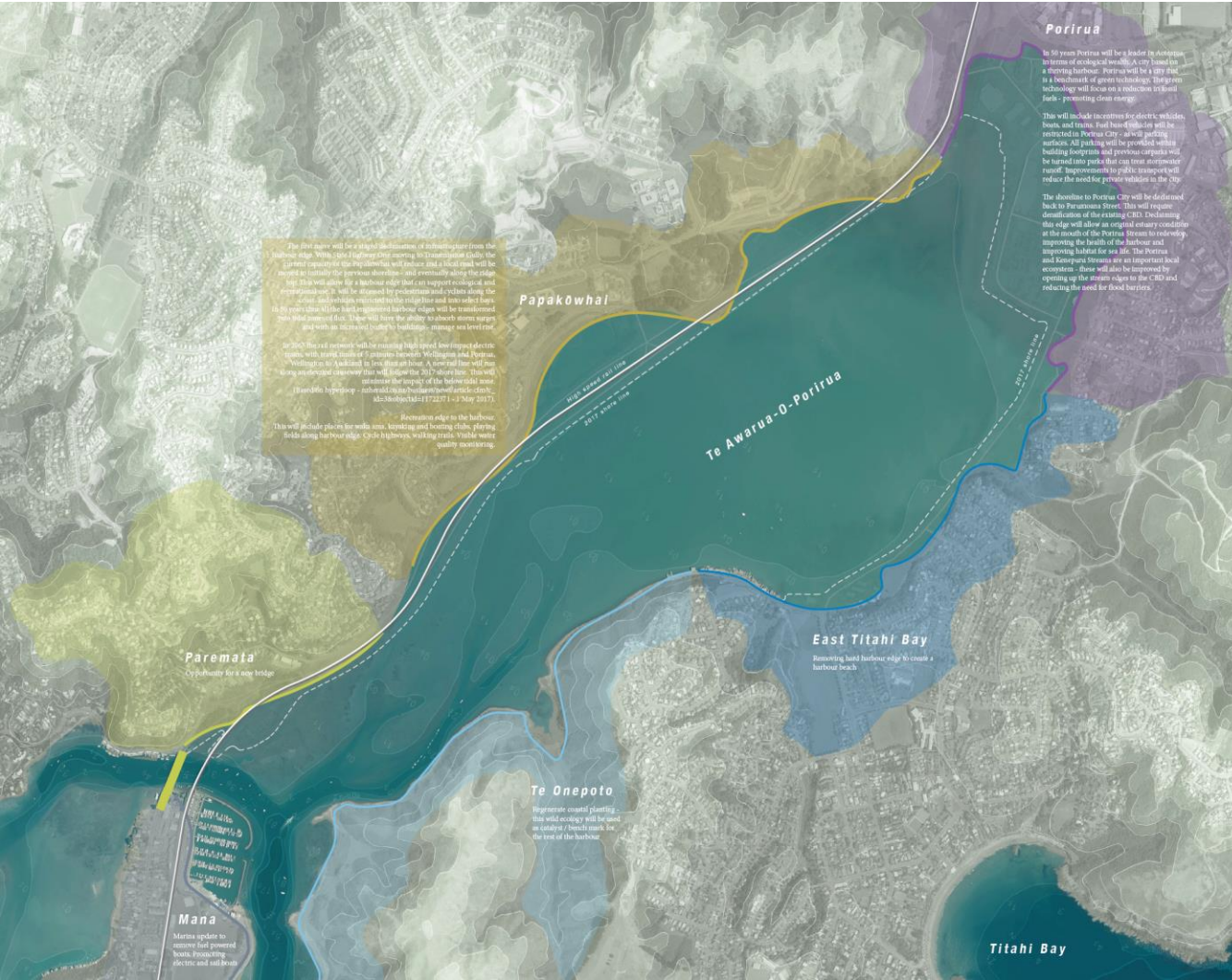
# Addressing wider issues such as climate change and housing



INCREMENTAL HOUSING CONCEPT



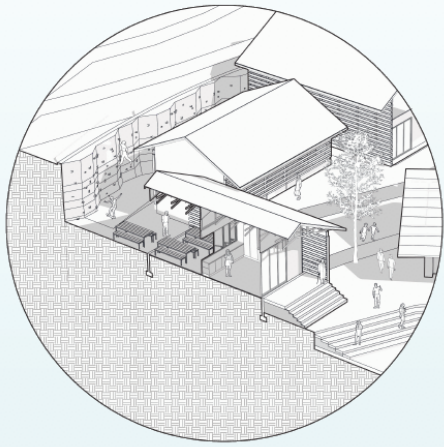
MASTER PLAN OF PORIRUA HARBOUR



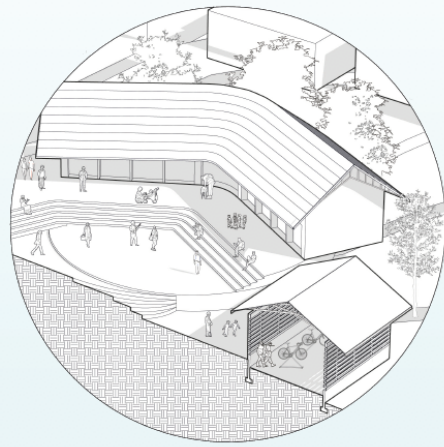
Source: Cory Manson

Source: Haroun Barazanchi

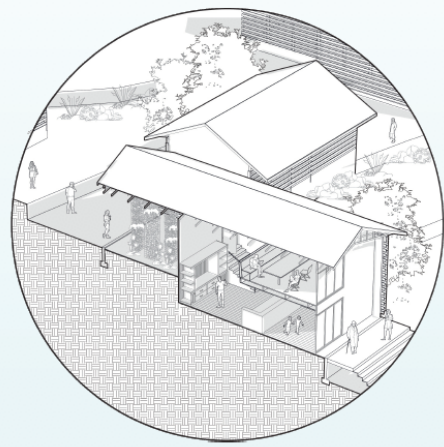




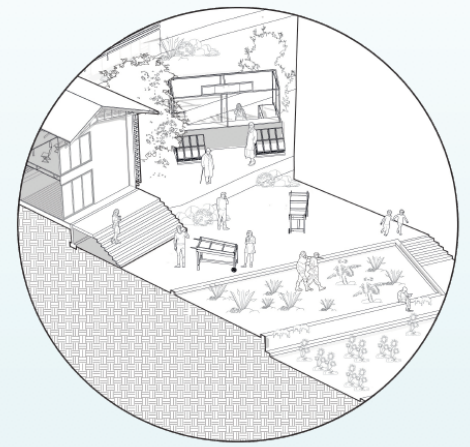
**Kame House / Food House**  
 Scene - Community 'Tuck Shop'  
 Housing Unit with indoor seating area for public occupation as community cafe - opening to community plaza & secluded rock climbing wall



**Whare Tapere / Community Plaza**  
 Scene - Community Plaza  
 Shared public seating & plaza at the heart of the village as communal meeting point for entertainment, education & cultural events

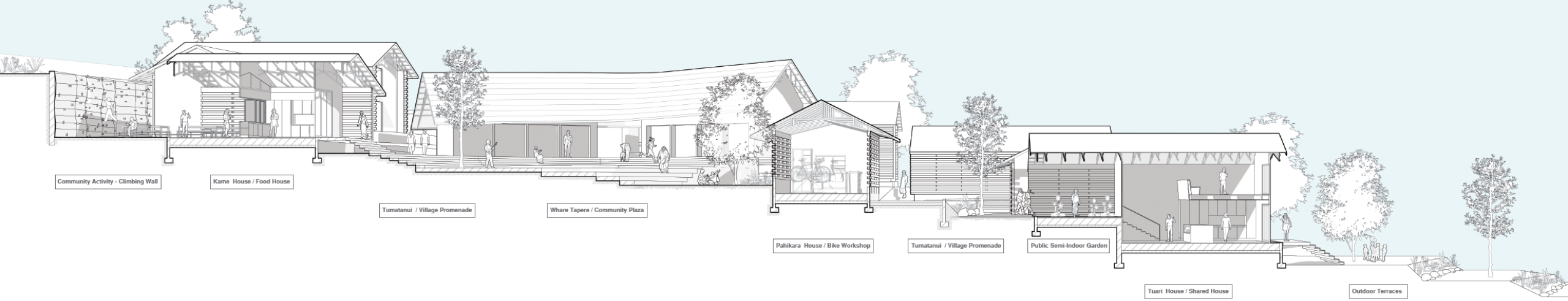


**Pahikara House / Bike Workshop**  
 Scene - Public Bicycle Workshop  
 Workshop area for bicycle service & repair



**Makoto / Community Market**  
 Scene - Terraces & Market Stall  
 Communally accessible terraces for food production with market stall for sale & distribution. Integrated environments with village

**Tuari House / Shared House**  
 Scene - Food Production  
 Indoor vegetable garden for shared food supply  
 Private living mezzanine with public living area at ground level



Community Activity - Climbing Wall

Kame House / Food House

Tumatanui / Village Promenade

Whare Tapere / Community Plaza

Pahikara House / Bike Workshop

Tumatanui / Village Promenade

Public Semi-Indoor Garden

Tuari House / Shared House

Outdoor Terraces

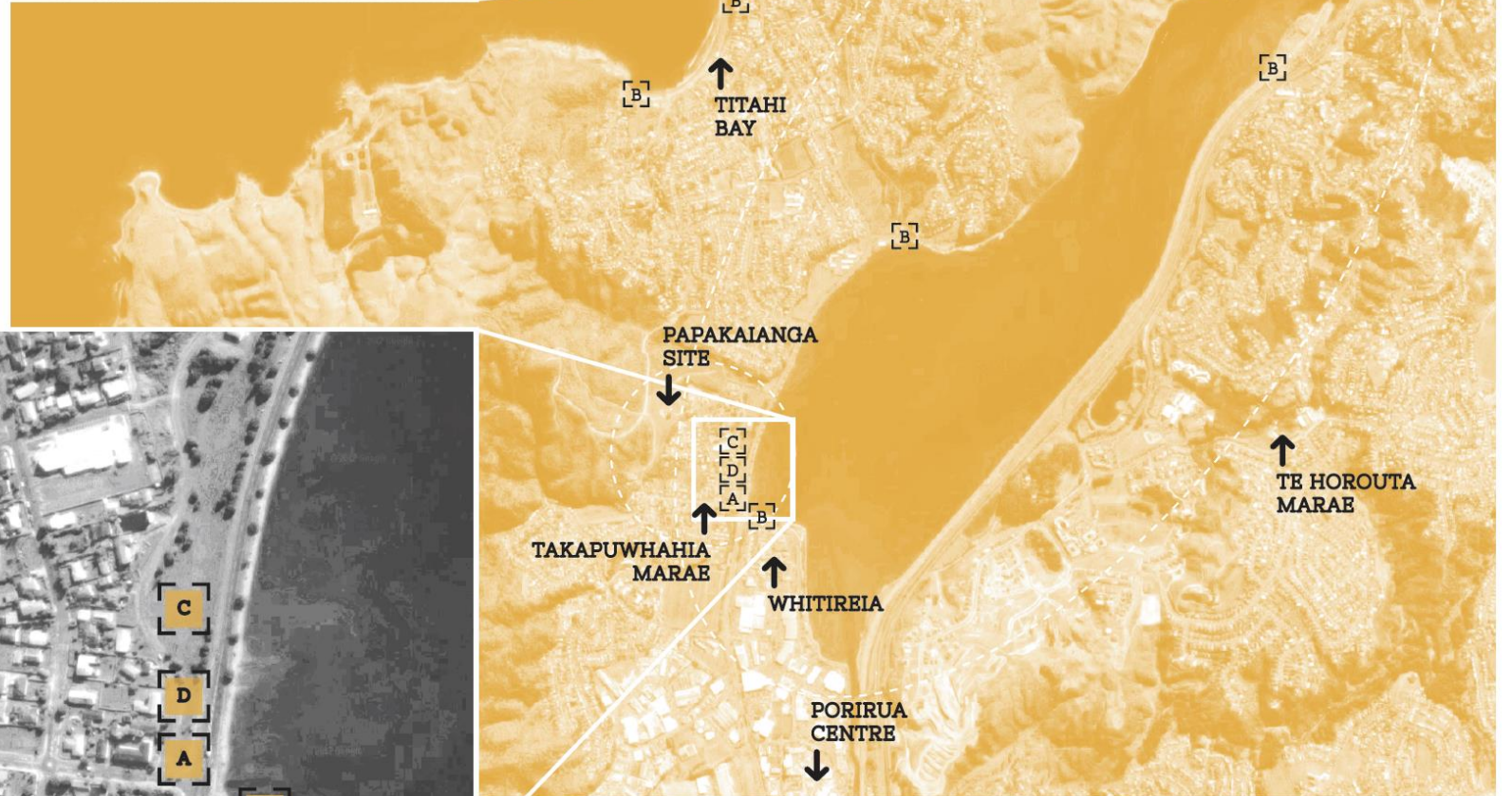


# Connections

People to each other

People to environment

Reconnecting broken links in environmental systems





# Connections

People to each other

People to environment

Reconnecting broken links in environmental systems

## URBAN SUSTAINABILITY AIMS FOR PORIRUA AS A DECOLONISED CITY



CULTURAL

Encourage an awareness of the harbour and reinstate the principles of Ngāti Toa Rangatira.



SOCIAL

Create a lively, socially active space around the water's edge that is 'like a good party.'



ECONOMIC

Provide mixed-use development around the water encouraging new opportunities for economic growth.



ENVIRONMENTAL

Create a more resilient landscape in the city for flooding and improve the health of the harbour.





Source: Lizzie Yarina

A new form of colonisation?  
Pasifika overlay

The discussion continues.....

# Summary

- Bring Māori values and mātauranga into city making
- Empowering people and young people, in particular, to engage with city making processes
- Pragmatically – how might Ngāti Toa use settlement land
- Overdue conversations
- How do we do that ethically?
- Provoke, disrupt, start the conversation.....